

Enslaved

Peoples of the
Historical Slave Trade

The background is a historical map of the Atlantic Ocean, showing the Gulf Stream and the slave trade routes. The map includes labels for 'NEW SOUTH WALES', 'AMERICA', 'AFRICA', 'EUROPE', and 'ASIA'. A large, semi-transparent, curved arrow points from the west coast of Africa towards the Americas, representing the transatlantic slave trade.

**ENSLAVED.ORG: A KNOWLEDGE
REPRESENTATION IN WIKIBASE OF PEOPLE,
EVENTS, AND PLACES IN THE HISTORICAL
SLAVE TRADE**

November, 10th 2020
Center for Spatial Studies UCSB
Seila González Estrecha

Enslaved

Peoples of the
Historical Slave Trade

ENSLAVED.ORG

Enslaved

Peoples of the
Historical Slave Trade

Explore or reconstruct the lives of individuals who were enslaved, owned slaves, or participated in the historical trade.

[Learn More](#)

Start a search across **610549** records from the historical slave trade

[Go to Advanced Search](#)

Search People, Events, and Places



Explore

Browse People, Events, Places, and Sources

People	382820	>
Events	211216	>
Places	14007	>
Sources	2506	>

Challenges for Enslaved.org

- Disambiguating and merging individuals across multiple datasets is nearly impossible given their current, siloed nature.
- Searching, browsing, and quantitative analysis across projects is extremely difficult.
- It is often difficult to find projects and databases.
- There are no best practices for digital data creation.
- Many projects and datasets are in danger of going offline and disappearing.



Objectives

- PEOPLE
- KNOWLEDGE REPRESENTATION
- BEST PRACTICE AND WORKFLOWS
- SCHOLARLY RECOGNITION
- PRESERVATION AND SUSTAINABILITY

Places in Historical Records

Cuba

Type	Located In	Modern Country
Province	Caribbean	Cuba

Place's Connections

 1  1

Cuba

Type	Located In	Modern Country
Country	North America	Cuba

Place's Connections

 2  1

Cuba

Type	Located In	Modern Country
Port	Cuba	Cuba

Place's Connections

 338  1

Places in Historical Records

Name

Belle Isle

Type

Other Place Type

Coordinates

Point(-78.175783 18.288097)

Located In

North America
Caribbean Islands
Americas
Jamaica
Westmoreland

Name

Plantation

Type

Plantation

Located In

United States
Georgia
Hancock County

- Places could be as detailed as GIS coordinates with associations to other known places.
- Places could have more general names like Plantation, Catholic Church...
- Places could be also interpretations of the data made by historians.

Places in Historical Records

Other Spanish Caribbean

<i>Type</i>	<i>Located In</i>
Province	Caribbean

Place's Connections

 1

Spanish Circum-Caribbean

<i>Type</i>	<i>Located In</i>
Province	Spanish Mainland America

Place's Connections

 1

Place Type Controlled Vocabulary

City, Town, or Village

1009 >

Continent

6 >

Country

91 >

County or Parish

466 >

Court

1 >

Domicile

3 >

Maroon Community

1 >

Other Place Type

11314 >

Plantation

249 >

Port

575 >

Province

196 >

Region

62 >

Worship Site

33 >

The importance of Provenance

Auction Notice

5 >

Bill of Sale or Receipt

619 >

Census or Register

188 >

Freedom or Emancipation Document

424 >

Life History

86 >

Newspaper

130 >

Runaway Ad

20 >

Secondary Source

21 >

Ship Registry or Manifest

10 >

Will

18 >

Events and Places

Name

San Joaquin Voyage

Description

This voyage embarked with approximately 46 enslaved people and disembarked with approximately 39 enslaved people. The vessel was captured by the British and condemned at the Vice-Admiralty Court, Sierra Leone.

External References

<https://slavevoyages.org/voyage/7522/variables>

Date

1816-02-16

Type

Voyage

Located In

Bight of Biafra and Gulf of Guinea Islands
Matanzas
Freetown

Events and Places

Name

Baptism of Jean Baptiste Barnable

Type

Baptism or Naming Ceremony

Located In

Catholic Church

Name

Catholic Church

Type

Worship Site

Located In

New Orleans

People of the Slave Trade

Name

Marie Louise Alzina

First Name

Marie Louise

Surname

Alzina

Sex

Female

Age

58 - **Registration of Marie Louise Alzina**
50 - **Manumission of Marie Louise Alzina**

Occupation

Domestic Service

Race

Negro

Status

Freed Person - **Manumission of Marie Louise Alzina**

Ethnolinguistic Descriptor - Place Of Origin

Afro-Creole - **Clarendon**

Roles

Registered Person - **Registration of Marie Louise Alzina**

Emancipated Person - **Manumission of Marie Louise Alzina**

Child - **Birth of Marie Louise Alzina**

Name

Clarendon

Type

City, Town, or Village

Located In

North America
Jamaica

- Enslaved.org people records are the core of the project.
- Set of core fields to define people.
- One important field: **Origins.**
- Origin field has **Ethnolinguistic** descriptor, i.e. their ethnic identity and **Place of Origin.**
- Two type of fields for occupations and **ethnonyms.**

People of the Slave Trade

Name

Micaela

SexFemale**Age**50 - **Inventory of Rosa in 1803****Status**Enslaved Person - **Inventory of Rosa in 1803****Ethnolinguistic Descriptor - Place Of Origin**Guine - **Upper Guinea****Roles**Registered Person - **Inventory of Rosa in 1803****Name**

Unknown

SexFemale**Age**38 - **Inventory of Aguiar in 1805****Status**Enslaved Person - **Inventory of Aguiar in 1805****Ethnolinguistic Descriptor - Place Of Origin**Floup - **Upper Guinea****Roles**Registered Person - **Inventory of Aguiar in 1805**

Unnamed people with different ethnonym but both coming from the same region “Upper Guinea”.

Unnamed people still could have multiples relations.

📍 Aguiar - Master or Owner

📍 Jose - Spouse

Enslaved

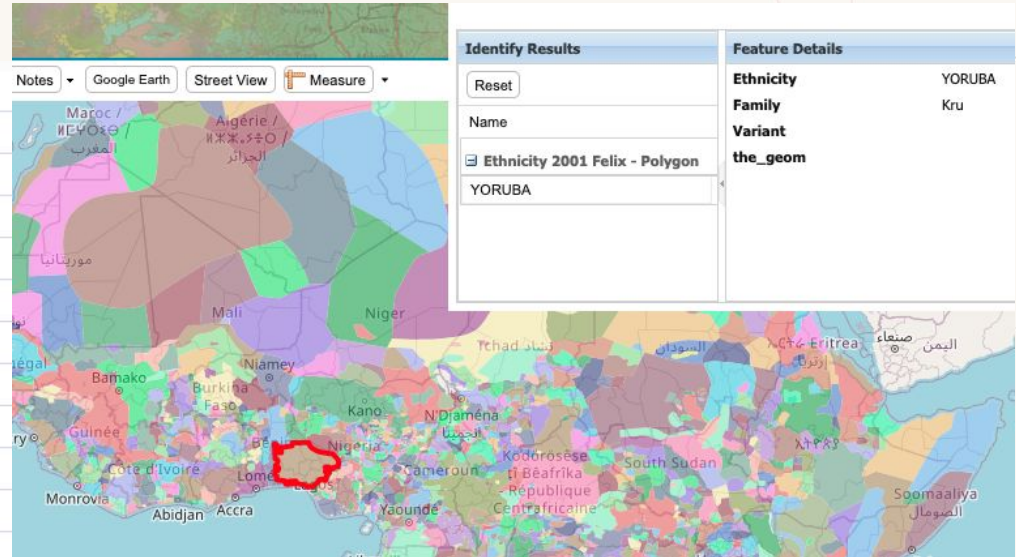
Peoples of the
Historical Slave Trade

Ethnonyms

Ethnolinguistic Descriptor

Ethnolinguistic Descriptor	Count
Yoruba	9,384
Igbo	8,568
Congo	2,754
Crioul	2,707
Anglo-African	1,592
Afro-Creole	1,166
Mandinga	1,078
Angola	1,016
Mina	831
Kongo	823
Bijago	398
Guinea	385
Fula	342
Bambara	341
Akan	335

31,720



Available: <http://worldmap.harvard.edu/africamap/>

Need for a Place to Disambiguate People

People information in multiple sources.

A location helps to distinguish if a person record is connected or related to another person record.

Set of fields that will allow the scholar to determine if person record A and person record B are the same person.

The combination of Events-Places-Dates is key for determining a match.

Enslaved

Peoples of the
Historical Slave Trade

Free Blacks Database

Priscilla Baltimore (Q422929)

1 of 1
Matches

Record

Source

Generated by
Free Blacks Database

Place

Q408114 - St Louis - City, Town, or Village

Q408049 - New Orleans - City, Town, or Village

Place type

City, Town, or Village

Located in

Louisiana, North America, Missouri, United States

Event

Q412621 - Manumission of Priscilla Baltimore -
Emancipated Person - Emancipation or
Manumission

Q411729 - Relocation of Priscilla Baltimore - 1804 -
Relocated Person - New Orleans - Relocation

Q410121 - Birth of Priscilla Baltimore - 1804 - Child
- St Louis - Birth

Q414743 - Registration of Priscilla Baltimore - 1859
- Registered Person - New Orleans - Registry

Event type

Birth, Relocation, Emancipation or Manumission,
Registry

Date

1859, 1804

Hutchins Center for African & African American Research

Highest
Match Score

Priscilla Baltimore (Q490415)

Record

Source

Generated by
Hutchins Center for African & African
American Research

Place

Q487176 - St Louis - City, Town, or Village

Q486653 - Bourbon County - County or
Parish

Place type

City, Town, or Village, County or Parish

Located in

United States, Missouri, Kentucky

Event

Q488701 - Birth of Priscilla Baltimore - 1801 -
Child - Bourbon County - Birth

Q490004 - Death of Priscilla Baltimore - 1882
- Deceased Person - St Louis - Death

Event type

Birth, Death

Date

1882, 1801

Provides participant role

Child, Deceased Person

Shares

Place

Place type

City, Town, or Village

Located in

Missouri, United States

Event

Event type

Birth

Provides participant role

Child

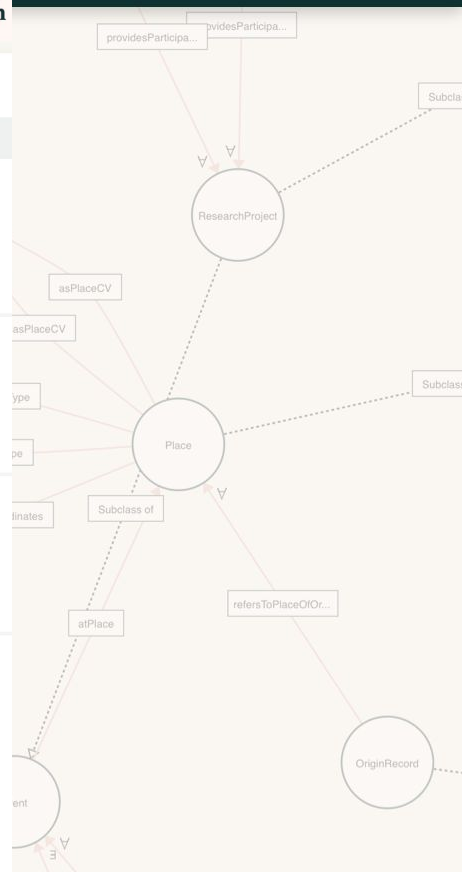
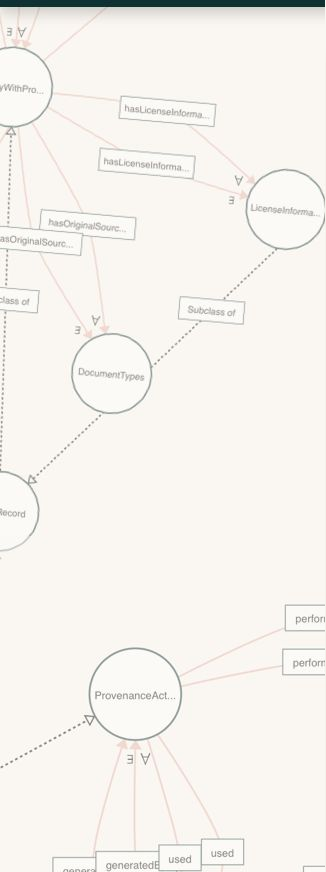
Person

Sex

Female

Participant role

Child



Competency Questions

The Public

Who were the relatives of Jack George, an enslaved person who lived in New Orleans between the years 1811 and 1820.

Do you have information about my relative, a mulatto slave named Elizabeth in New Orleans between 1801 and 1820?

K-12

Can you write for me a paper about a slave rebellion for Mr. Smith's class by Friday?

Find an enslaved girl named Maria who lived in Brazil in the 1820s, an enslaved girl named Marie who lived in Martinique at the same time, and an enslaved girl named Mary in Virginia also alive in the 1820s. How were their lives similar? How were they different?

Scholars

What were the ethnic groups of enslaved people in South Carolina in 1820?

What were the ethnic groups of enslaved people transported from the port of Cabinda from 1751-1800?

How many Congo women married Angola men in Brazil in the 1820s?

Controlled Vocabulary

- Controlled vocabularies for *Enslaved.org* Metadata fields.
- Help ensure data consistency across the platform.
- Mapping terms from contributor data to the controlled vocabularies used on *Enslaved.org*.

EVENT Vocabulary

Event Type

PERSON Vocabularies

Sex

Age Category

Occupation

Relationships

Person Status

Role within Event (by specific Event Type)

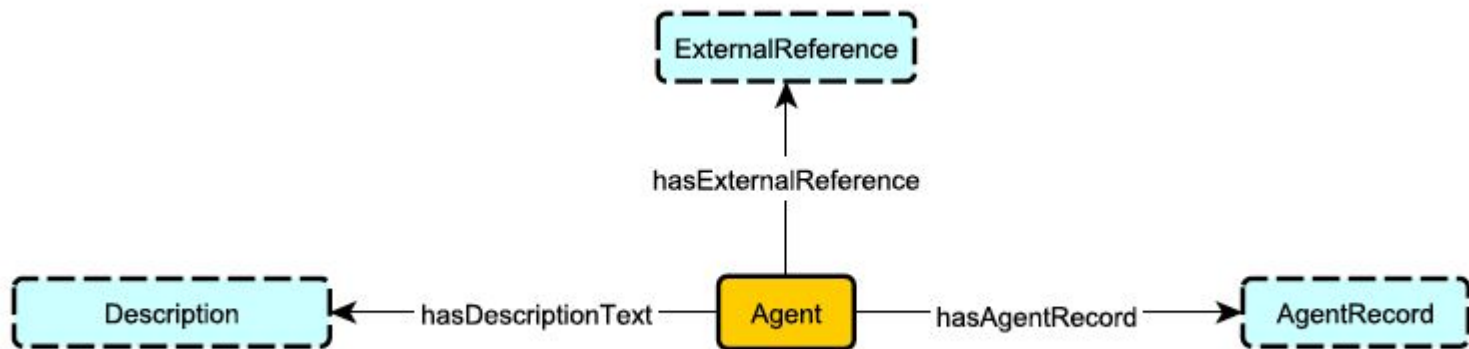
PLACE Vocabulary

Place Type

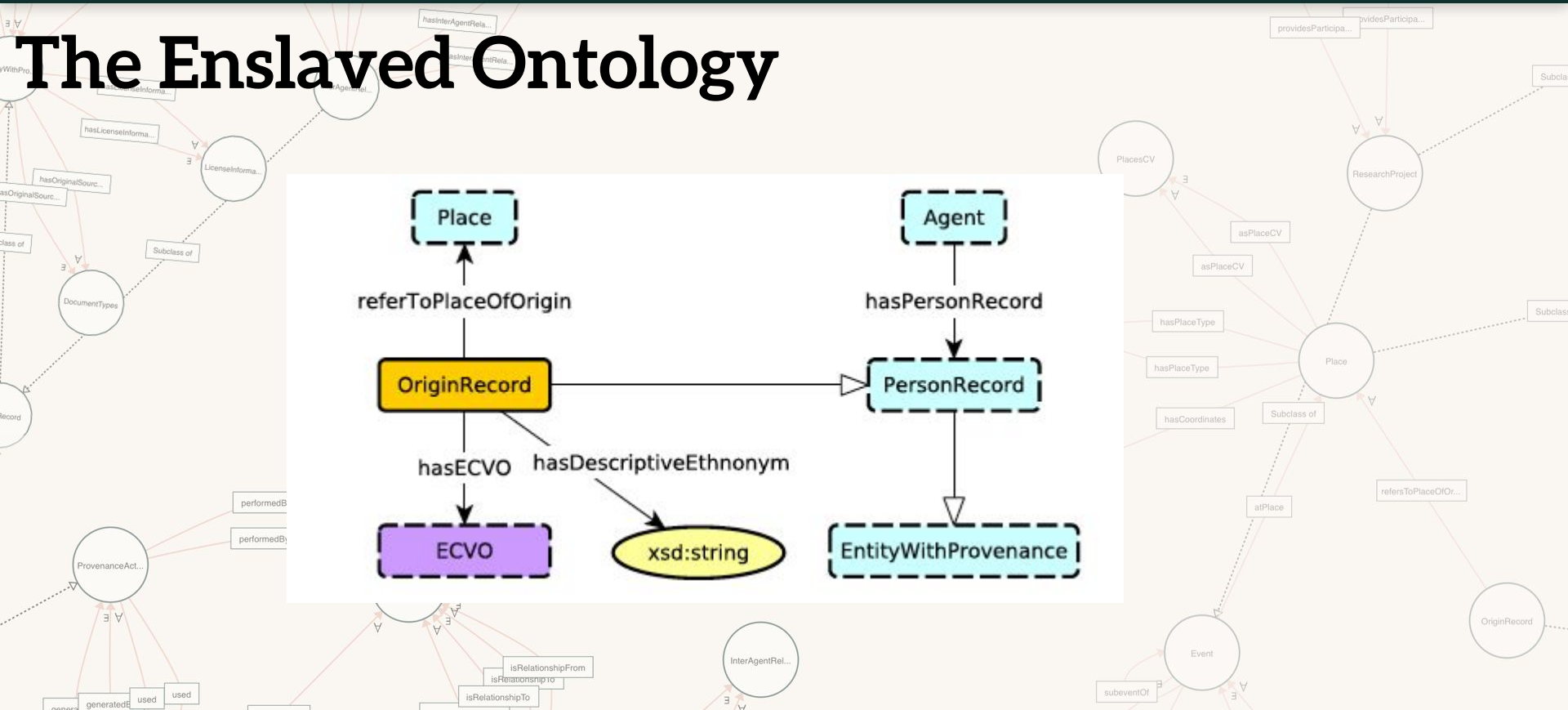
SOURCE Vocabulary

Document Type

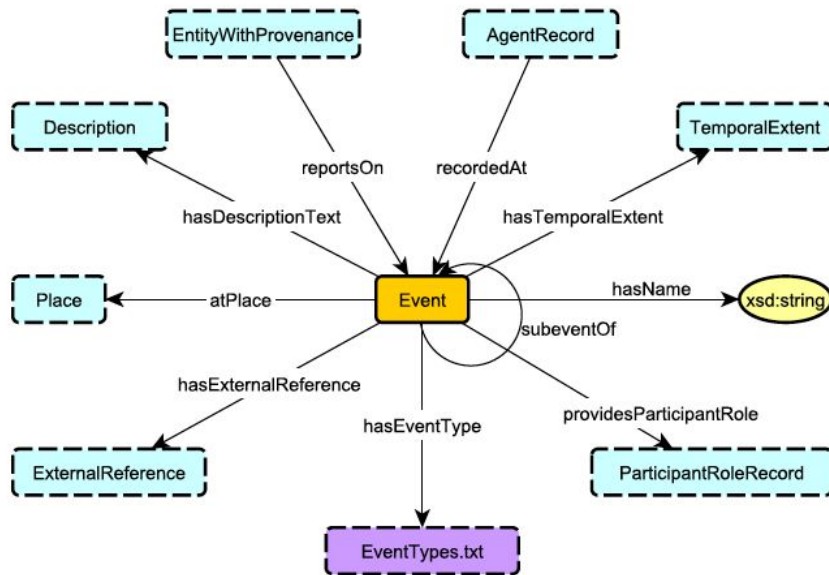
The Enslaved Ontology



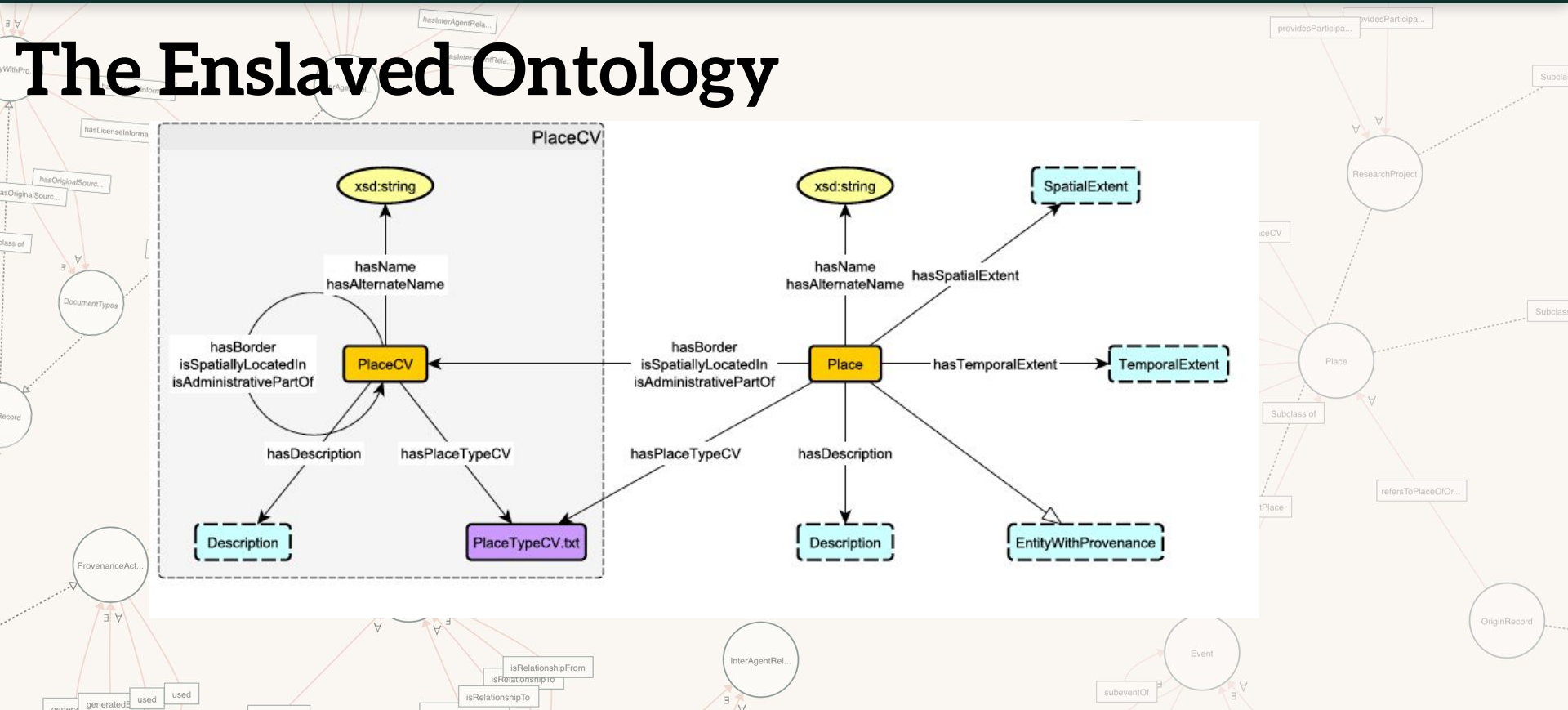
The Enslaved Ontology



The Enslaved Ontology



The Enslaved Ontology

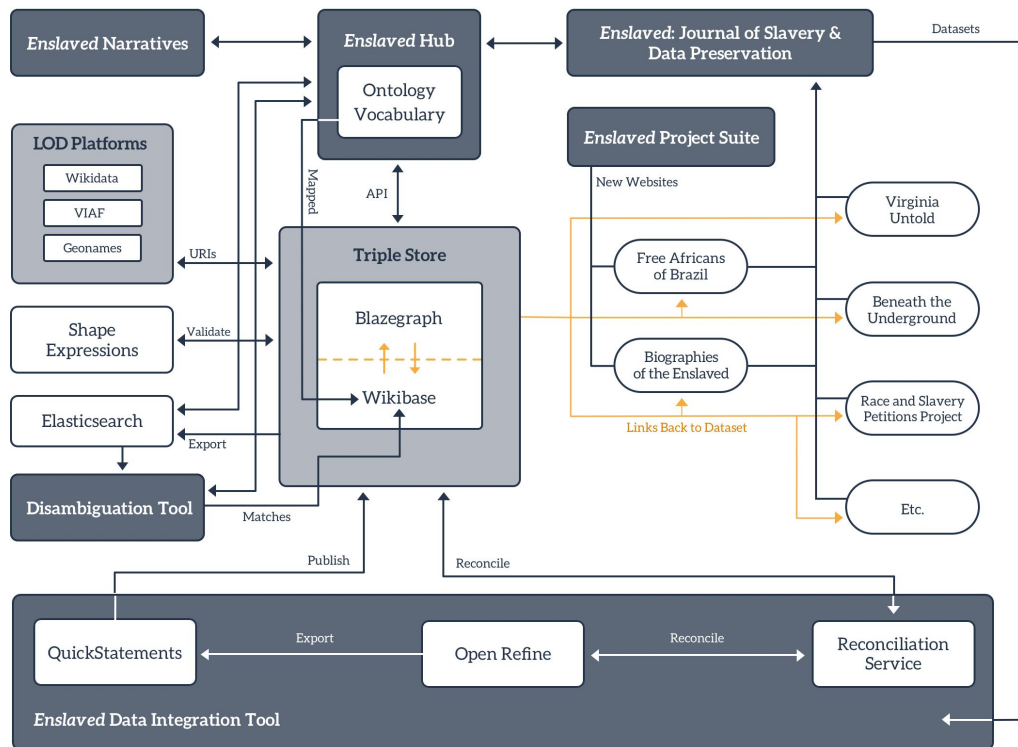


Enslaved

Peoples of the
Historical Slave Trade

Enslaved.org Infrastructure Diagram

Arrows Indicate Dataflows



Journal of Slavery and Data Preservation

Journal of Slavery
and Data Preservation

[About](#) [Contribute](#) [Contact](#) [Search](#) [Issues](#) [Community](#)

Issues

Year Sort By 24 per page



June 2020

Volume 1 Issue 1 Special Issue on Slave Biographies

Issue Editor(s)
Walter Hawthorne

[View >](#)

In this Issue [Show All](#)

**Maranhão Inventories Slave
Database, 1767-1831**

Walter Hawthorne

Louisiana Slave Database

Gwendolyn Midlo Hall

Free Blacks Database

Brian K. Mitchell

Wikibase

- Extension of MediaWiki.
- Repository for wikidata.org.
- Many multiple data types ex: item, string, coordinates, property, external identifiers, time, geographic shapes.
- Concept of qualifiers and references.

Data Model Available:

<https://www.mediawiki.org/wiki/Wikibase/DataModel>



[Main page](#)
[Recent changes](#)
[Random page](#)
[Help about MediaWiki](#)

Tools
[What links here](#)
[Related changes](#)
[Special pages](#)
[Printable version](#)
[Permanent link](#)
[Page information](#)
[Concept URI](#)

In other languages
[Add links](#)

Page [Discussion](#)

[Read](#) [View history](#) [Search LOD](#)

Cojuquittah (Q100093)

SV-PER-10026
SV-PER-10026

[In more languages](#) [Configure](#)

Language	Label	Description	Also known as
English	Cojuquittah	SV-PER-10026	SV-PER-10026

Statements

instance of	Person	
	recordedAt	Emilia Disembarkation of Captured Persons at Freetown, Sierra Leone
		0 references

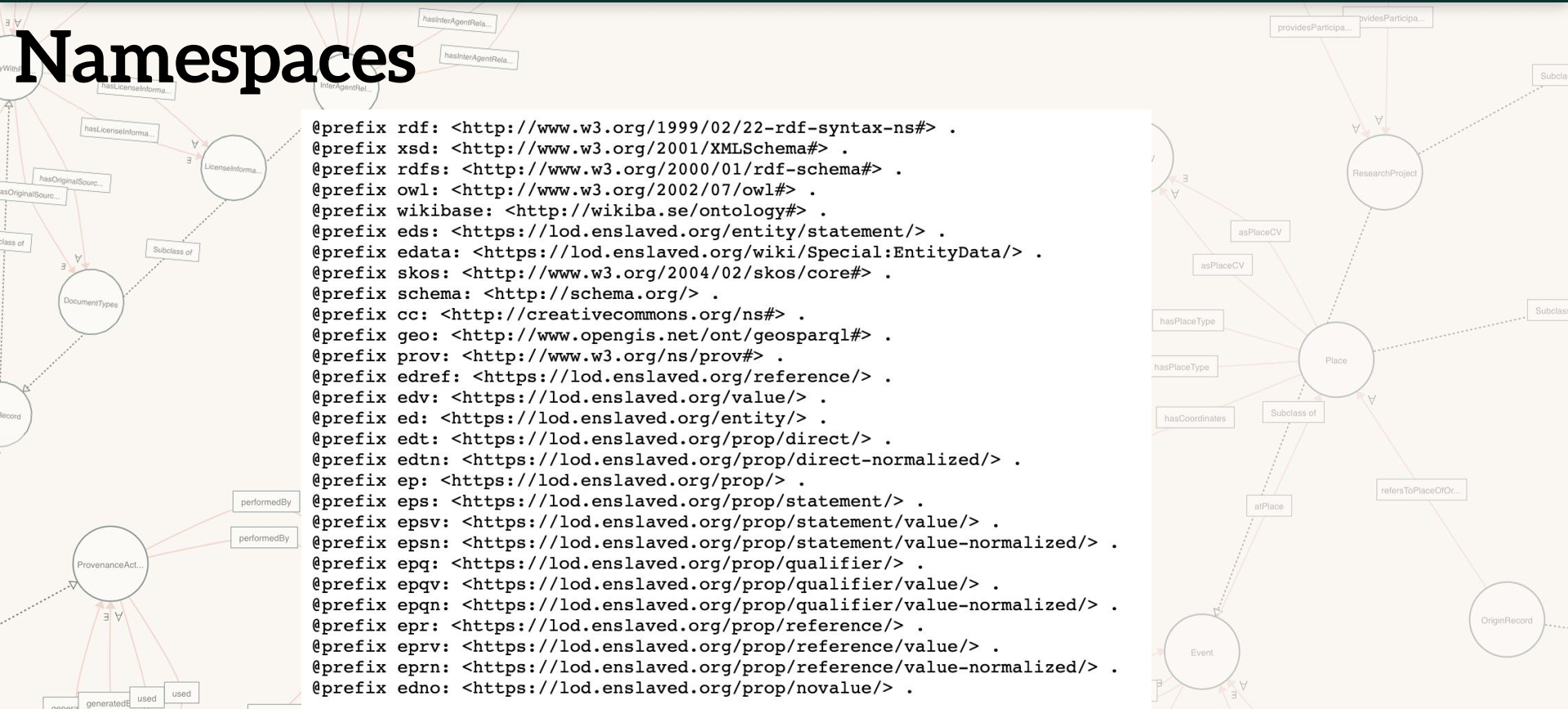
hasName	Cojuquittah	
	recordedAt	Emilia Disembarkation of Captured Persons at Freetown, Sierra Leone
		1 reference

hasSex	Female	
	recordedAt	Emilia Disembarkation of Captured Persons at Freetown, Sierra Leone
		1 reference

ps://lod.enslaved.org/wiki/Q11301

Namespaces

```
@prefix rdf: <http://www.w3.org/1999/02/22-rdf-syntax-ns#> .
@prefix xsd: <http://www.w3.org/2001/XMLSchema#> .
@prefix rdfs: <http://www.w3.org/2000/01/rdf-schema#> .
@prefix owl: <http://www.w3.org/2002/07/owl#> .
@prefix wikibase: <http://wikiba.se/ontology#> .
@prefix eds: <https://lod.enslaved.org/entity/statement/> .
@prefix edata: <https://lod.enslaved.org/wiki/Special:EntityData/> .
@prefix skos: <http://www.w3.org/2004/02/skos/core#> .
@prefix schema: <http://schema.org/> .
@prefix cc: <http://creativecommons.org/ns#> .
@prefix geo: <http://www.opengis.net/ont/geosparql#> .
@prefix prov: <http://www.w3.org/ns/prov#> .
@prefix edref: <https://lod.enslaved.org/reference/> .
@prefix edv: <https://lod.enslaved.org/value/> .
@prefix ed: <https://lod.enslaved.org/entity/> .
@prefix edt: <https://lod.enslaved.org/prop/direct/> .
@prefix edtn: <https://lod.enslaved.org/prop/direct-normalized/> .
@prefix ep: <https://lod.enslaved.org/prop/> .
@prefix eps: <https://lod.enslaved.org/prop/statement/> .
@prefix epsv: <https://lod.enslaved.org/prop/statement/value/> .
@prefix epsn: <https://lod.enslaved.org/prop/statement/value-normalized/> .
@prefix epq: <https://lod.enslaved.org/prop/qualifier/> .
@prefix epqv: <https://lod.enslaved.org/prop/qualifier/value/> .
@prefix epqn: <https://lod.enslaved.org/prop/qualifier/value-normalized/> .
@prefix epr: <https://lod.enslaved.org/prop/reference/> .
@prefix eprv: <https://lod.enslaved.org/prop/reference/value/> .
@prefix eprn: <https://lod.enslaved.org/prop/reference/value-normalized/> .
@prefix edno: <https://lod.enslaved.org/prop/novalue/> .
```



References and Qualifiers

```
ed:Q100093 ep:P20 eds:Q100093-92A444B2-A573-45C8-B74E-A13DE8AB4A34 .
```

```
eds:Q100093-92A444B2-A573-45C8-B74E-A13DE8AB4A34 a wikibase:Statement,  
    wikibase:BestRank ;  
wikibase:rank wikibase:NormalRank ;  
eps:P20 "Cojuquittah" ;  
epq:P18 ed:Q11301 ;  
prov:wasDerivedFrom edref:0e3f6006da909eaa87b83ad7086e67d648bf8a75 .
```

```
edref:0e3f6006da909eaa87b83ad7086e67d648bf8a75 a wikibase:Reference ;  
    epr:P6 ed:Q9926,  
        ed:Q9896,  
        ed:Q9937 ;  
    epr:P21 <https://slavevoyages.org/voyage/2384/variables/> .
```

Enslaved Ontology Alignment

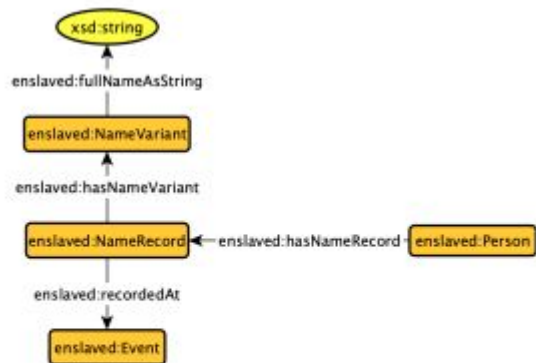


Figure 2: The Example of Enslaved Knowledge Graph for the Enslaved Project

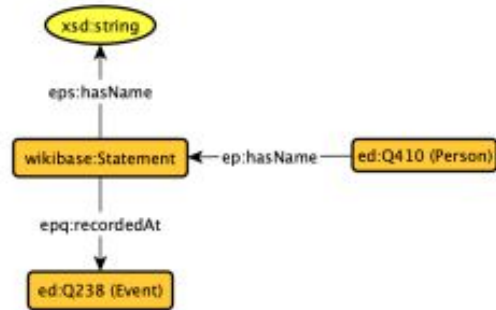


Figure 3: The Example of Wikibase Repository for the Enslaved Project

Available: *The Enslaved Dataset: A Real-world Complex Ontology Alignment Benchmark using Wikibase*
<https://daselab.cs.ksu.edu/sites/default/files/2020-CIKM-enslaved-alignment.pdf>

Enslaved Ontology Alignment

Pattern	Occurrences	Category
Class Equivalence	15	1:1
Typed Property Chain Equivalence	67	m:n
Typed Property Chain Subsumption	16	m:n

Formal Pattern: $C_1(x) \leftrightarrow C_2(x)$

Example: $\text{enslaved:Person}(x) \leftrightarrow \text{ed:Q410}(\text{Person})(x)$

Example:

$\text{enslaved:Person}(x) \wedge \text{enslaved:hasSexRecord}(x, y) \wedge$
 $\text{enslaved:SexRecord}(x, y) \wedge \text{enslaved:hasValue}(y, z) \wedge$
 $\text{enslaved:SexTypes}(z) \leftrightarrow \text{ed:Q410}(\text{Person})(x) \wedge$
 $\text{ep:P31}(\text{hasSex})(x, y) \wedge \text{wikibase:Statement}(y) \wedge$
 $\text{eps:P31}(\text{hasSex})(y, z) \wedge \text{ed:Q291}(\text{Sex})(z)$

Note that in this and all following patterns, any of the D_i or C_i may be omitted (in which case they are essential \top). Also, for the left-to-right direction, we assume that x_2, \dots, x_n are existentially quantified variables.

Available: *The Enslaved Dataset: A Real-world Complex Ontology Alignment Benchmark using Wikibase*

<https://daselab.cs.ksu.edu/sites/default/files/2020-CIKM-enslaved-alignment.pdf>

Enslaved

Peoples of the
Historical Slave Trade

Blazegraph

```
1 SELECT DISTINCT ?place ?name ?cc
2 (group_concat(distinct ?label; separator = "||") as ?locIn)
3 {
4   ?place ed:P1 ed:Q301.
5   ?place ed:P20 ?name.
6   ?place ed:P7 ?locatedIn.
7   ?locatedIn rdfs:label ?label.
8   ?place ed:P9 ?cc.
9   ?place ed:P8 ed:Q222.
10  FILTER NOT EXISTS {?place ed:P65 ?geonamesID}.
11
12 }group by ?place ?name ?cc
13 order by ?name
14
```

OpenRefine

OpenRefine LBS_PlacesNoreferenceThroughLocatedIN_20200824 csv [Permalink](#)

Facet / Filter

Undo / Redo 6 / 6

112 rows

Schema

Issues

Preview

Show as: rows records Show: 5 10 25 50 rows

All	place	name	references 1	references 2	references 3
☆	1. Trelawney Choose new match	Trelawney	Parliamentary Papers Choose new match	T71 Choose new match	
☆	2. Vere Choose new match	Vere	Parliamentary Papers Choose new match	T71 Choose new match	
☆	3. St Joseph Choose new match	St Joseph	Parliamentary Papers Choose new match	T71 Choose new match	
☆	4. St Mary Choose new match	St Mary	Parliamentary Papers Choose new match	T71 Choose new match	
☆	5. St George Choose new match	St George	Parliamentary Papers Choose new match	T71 Choose new match	
☆	6. Tacarigua and Arouca Choose new match	Tacarigua and Arouca	Parliamentary Papers Choose new match	T71 Choose new match	
☆	7. St John Choose new match	St John	Parliamentary Papers Choose new match	T71 Choose new match	
☆	8. Westmoreland Choose new match	Westmoreland	Parliamentary Papers Choose new match	T71 Choose new match	
☆	9. St Paul Choose new match	St Paul	Parliamentary Papers Choose new match	T71 Choose new match	
☆	10. Spanish Town (Virgin Gorda) Choose new match	Spanish Town (Virgin Gorda)	Parliamentary Papers Choose new match	T71 Choose new match	
☆	11. St Anne Sandy Point Choose new match	St Anne Sandy Point	Parliamentary Papers Choose new match	T71 Choose new match	
☆	12. Tragarete Choose new match	Tragarete	Parliamentary Papers Choose new match	T71 Choose new match	
☆	13. Kingston Choose new match	Kingston	Parliamentary Papers Choose new match	T71 Choose new match	Legacies of British Slave-ownership Digital Data Repository Choose new match
☆	14. Berbice Choose new match	Berbice	Parliamentary Papers Choose new match	T71 Choose new match	

Using facets and filters

Use facets and filters to select subsets of your data to act on. Choose facet and filter methods from the menus at the top of each data column.

Not sure how to get started?
[Watch these screencasts](#)

Reconciliation Service in OpenRefine

place	name	cc	locIn
Andersonville	Andersonville (Q486955)		
Athens	Instance of: Place Located In: Georgia, United States Aliases: HC-PLA-CIT-USGA.ANDERSONVILLE Placetypes: City, Town, or Village		
Atlanta			
Augusta			

Reconcile each cell to an entity of one of these types:

Place
Q301

Reconcile against type:

Reconcile against no particular type

Auto-match candidates with high confidence

Use fuzzy match to get more results

OpenRefine Schema

28118 rows Schema Issues Preview

Extensions: Wikidata

The Wikidata schema below specifies how your tabular data will be transformed into Wikidata edits. You can drag and drop the column names below in most input boxes: for each row, edits will be generated with the values in these columns.

place name locatedIn source 1 source 2

place

Terms

Label name override if present

+ add term

Statements

locatedIn

+ add qualifier

1 references

isDirectlyBase source 1

isDirectlyBase source 2

+ add

+ add reference

+ add value



QuickStatements

QuickStatements

[New batch](#)

[Last batches](#)

[Help](#)

[Export Errors](#)

Seila Gonzalez

Your last batches

Batch #413 "20200724LBS-PER-Q486564ALL225001-265126" on by Alicia Sheill [\[Batches\]](#)

Status: DONE

100% (80250) of 80252 done , 2 errors

First Page 1 Next Last

All errors Init Done 10 ▾

done	Edward Charles [Q615983]	ADD	Statement	hasSurname [P72] : "Charles"	
done	Edward Charles [Q615983]	ADD	Sources	hasSurname : "Charles"	isDirectlyBasedOn:Data excerpts from Legacies of British Slave-ownership Digital Data Repository [Q486564]
done	Edward Charles [Q615983]	ADD	Statement	hasSex [P31] : Male	[Q209311]
done	Edward Charles [Q615983]	ADD	Sources	hasSex : Male	isDirectlyBasedOn:Data excerpts from Legacies of British Slave-ownership Digital Data Repository [Q486564]
done	Edward Charles [Q615983]	ADD	Statement	hasDescription	: "Possibly of Liverpool; see claim notes for St Mary claim no. 103 (Upton)."
done	Edward Charles [Q615983]	ADD	Sources	hasDescription : "Possibly of Liverpool; see claim notes for St Mary claim no. 103 (Upton)."	isDirectlyBasedOn:Data excerpts from Legacies of British Slave-ownership Digital Data Repository [Q486564]
done	Alice Smith [Q615996]	ADD	Statement	hasFirstName [P73] : "Alice"	
done	Alice Smith [Q615996]	ADD	Sources	hasFirstName : "Alice"	isDirectlyBasedOn:Data excerpts from Legacies of British Slave-ownership Digital Data Repository [Q486564]
done	Alice Smith [Q615996]	ADD	Statement	hasSurname [P72] : "Smith"	
done	Alice Smith [Q615996]	ADD	Sources	hasSurname : "Smith"	isDirectlyBasedOn:Data excerpts from Legacies of British Slave-ownership Digital Data Repository [Q486564]

QuickStatements Improvements

- Parallel execution with 40 bots.
- Database modification, a table per batch.
- Run in background option.
- Change frontend to not rely on external libraries.
- Upload a file.
- Export errors.
- Edit button
- Error handling attempts
- Adding pagination to the batches page.



Shape Expressions

- Structural schema language for RDF graphs.
- <https://shex.io/shex-semantic/>
- Mechanism for describing and validating RDF data.
- Validate axioms for the Ontology.
- <https://www.slideshare.net/jelabra/shex-vs-shacl>

```
start=@<place>

<place> {
  rdfs:label rdf:langString;
  skos:altLabel rdf:langString;

  ep:P1 { #instance of Place
    eps:P1 [ed:Q301];
  };
  ep:P8 { #has placeType
    eps:P8 @<#placeType>;
    prov:wasDerivedFrom @<#reference>+ ;
  };
  ep:P7 { #locatedIn
    eps:P7 IRI+;
  }*;
  ep:P59 { #coordinates
    eps:P59 geo:wktLiteral;
  }*;

  ep:P55 { #description
    eps:P55 xsd:string;
  }*;
```

Future Work

- Attracting more contributors.
- Improving tools to integrate and ingest data.
- Adding more GIS components into the graph.
- Build Event Records and Place Records for the ontology.
- Modification of controlled vocabulary and ontology to accommodate data about slavery in different contexts (Indigenous, European, North African Slavery).



Thank you

Visit: <https://enslaved.org>

Documentation: <https://docs.enslaved.org>

Contribute: <https://jsdp.enslaved.org/>